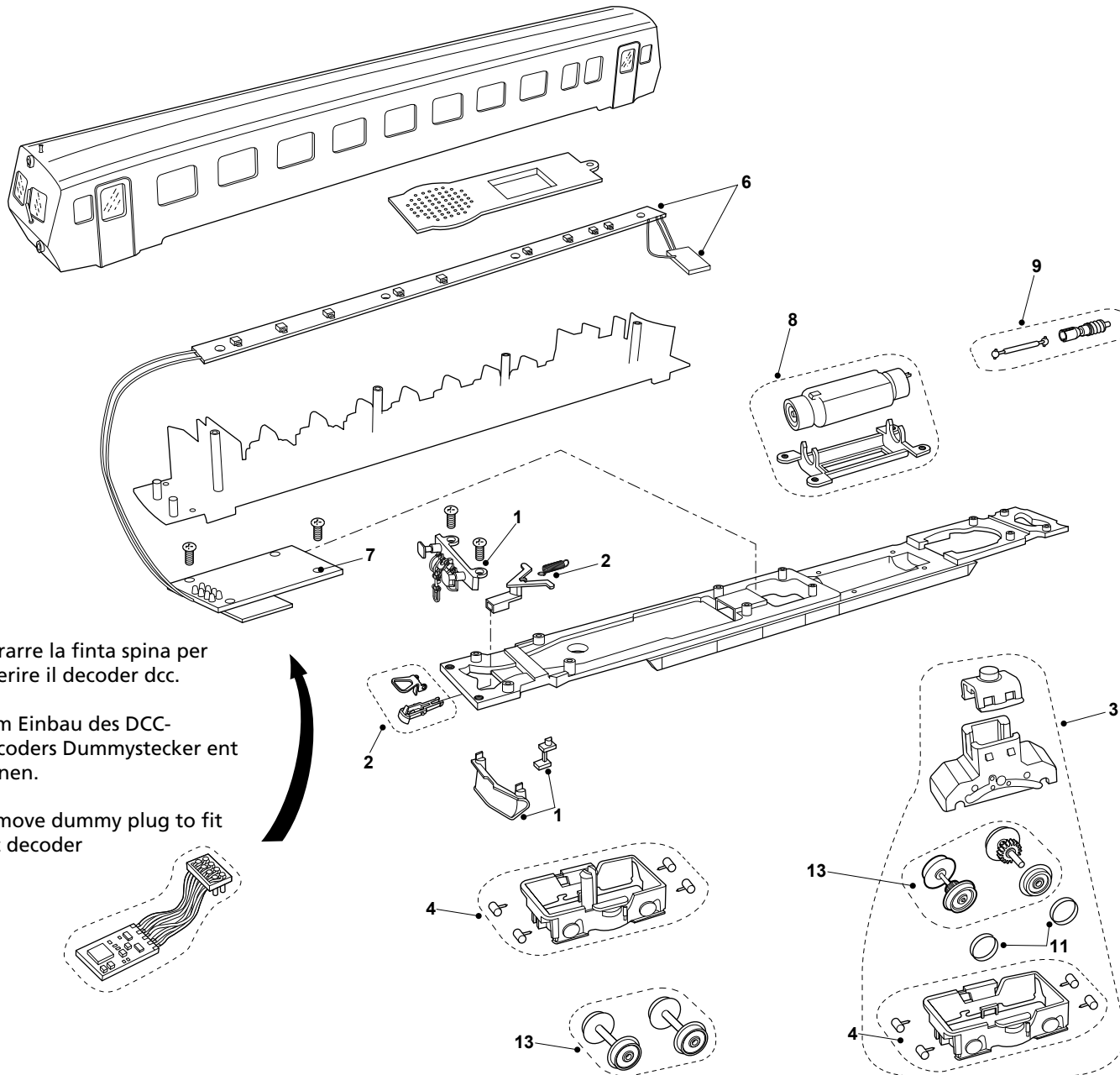


LISTA RICAMBI / ERSATZTEILLISTE / LIST OF SPARES

| N° di parte Art.Nr. Item No. | Descrizione Bezeichnung Description | Confezione Pckg. Pack | HR2056 |
|------------------------------------|--|-----------------------------|-----------|
| 1 | Confezione compressivo/Respingente Baugruppen/Puffer-Satz Assembly/Buffer Pack | pack | HR2056/1 |
| 2 | Confezione attacco Kupplungssatz Coupling pack | pack | HR2056/2 |
| 3 | Trasmissione Antrieb-Satz Drive Unit | pack | HR2056/3 |
| 4 | Carrello (senza ruote) D rehgestell (ohne Räder) Bogie Assembly (without wheels) | pack | HR2056/4 |
| 6 | Scheda circuito stampato luci Lichtleiterplatte Lights board | pack | HR2056/6 |
| 7 | Scheda principale a circuiti Stampati Hauptleiterplatte Main PCB board | pack | HR2056/7 |
| 8 | Confezione motore Motor-Satz Motor Pack | pack | HR2056/8 |
| 9 | Confezione Albero Universale Universal-Wellensatz Universal shaft pack | pack | HR2056/9 |
| 11 | Pneumatici Trazione Haftreifen Traction Tyres Pack | pack | HR2056/11 |
| 13 | Set ruote Radsatz Wheel set | pack | HR2056/13 |



Estrarre la finta spina per
inserire il decoder dcc.

Zum Einbau des DCC-
Decoders Dummysstecker ent-
fernen.

Remove dummy plug to fit
dcc decoder

